



ERGO
PLUS

CRIOCABIN
TASTE PRESERVATION

▶ BANCO STANDARD CON ANGOLI SFERICI

91 cm di esposizione, un ottimo rapporto qualità/prezzo, per un banco con angoli sferici apribili, e vetrina con cappello superiore in alluminio che garantisce una buona portata.

▶ STANDARD COUNTER WITH SPHERICAL CORNERS

91 cm of display and excellent value quality/price for this counter with spherical corners which can be opened, and a showcase with an upper top canopy in aluminium, ensuring a high loading capacity.

▶ COMPTOIR STANDARD AVEC ANGLES SPHÉRIQUES

91 cm d'exposition, un très bon rapport qualité/prix, pour un comptoir avec des angles sphériques ouvrants et vitrine avec plateau supérieur en aluminium qui garantit une bonne capacité de charge.

▶ STANDARD-KÜHLTHEKE MIT ABGERUNDETEN ECKEN

91 cm zur Warenausstellung. Ein optimales Preis/Leistungsverhältnis für eine Kühltheke mit zu öffnenden Runderdecken und einer Vitrine mit Aluminiumzähltafel, die eine gute Tragfähigkeit garantiert.





Luxury version

▶ CARATTERISTICHE DEL MOBILE

- Canalizzabile.
- Ventilazione frontale antiappannante.
- Potenziometro per ventilatori.
- Refrigerazione ventilata con evaporatore preverniciato.
- Vani di riserva refrigerati (EP100).
- Piano di lavoro in acciaio inox 304 antigraffio.
- Piano esposizione in acciaio inox AISI 304 satinato da 91 cm.
- Interno del mobile in acciaio inox AISI 304.
- Portacarta.
- Valvola termostatica a refrigerazione R404A.
- Vasca per raccolta condensa.
- Quadro elettronico.
- Piano appoggio superiore in alluminio verniciato.
- Illuminazione vetrina dotata di protezione lampada.
- Sbrinamento ventilato con arresto del compressore.
- Frontale personalizzabile (Luxury).
- Zoccolo parapolvere su tutto il perimetro del banco (Luxury).

▶ UNIT FEATURES

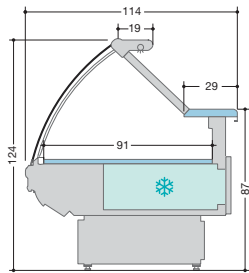
- Multiplexable.
- Anti-fogging front ventilation.
- Potentiometer for fans.
- Ventilated refrigeration with pre-painted evaporator.
- Refrigerator compartments (EP100).
- 304 stainless-steel scratchproof work surface.
- Satin-finished AISI 304 steel display surface.
- AISI 304 stainless-steel unit interior.
- Paper holder.
- R404A thermostatic refrigeration valve.
- Condensate collection tank.
- Electronic panel.
- Top shelf in painted aluminium.
- Cabinet lighting with lamp protection.
- Ventilated defrosting with compressor block.
- Personalised front (Luxury).
- Perimetrical bumper skirting (Luxury).

▶ CARACTERISTIQUES DE LA VITRINE

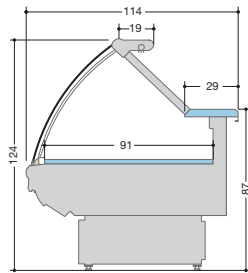
- Canalisable.
- Ventilation frontale antibuée.
- Potentiomètre pour ventilateurs.
- Réfrigération ventilée avec évaporateur pré-laqué.
- Réserve réfrigéré (EP100).
- Plan de travail en acier 304 antirayure.
- Plan d'exposition en acier AISI 304 satiné.
- Intérieur de la vitrine en acier inox AISI 304.
- Porte-papier.
- Soupape thermostatique à réfrigération R404A.
- Bac collecteur de l'eau de condensation.
- Panneau de control électronique.
- Surface d'appui supérieure en aluminium laqué.
- Eclairage vitrine avec protection lampe.
- Désembuage ventilé avec arrêt du compresseur.
- Façade personnalisable (Luxury).
- Plinthe de sol perimetral (Luxury).

▶ EIGENSCHAFTEN DES MÖBELS

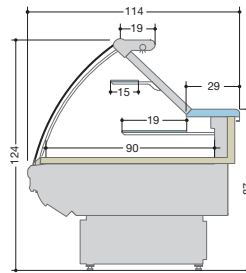
- Zusammenbaubar.
- Anti-Beschlag Frontbelüftung.
- Potentiometer für Ventilatoren.
- Umluftkühlung mit lackierten Verdampfern.
- Gekühlte Reservefächer (EP100).
- Arbeitsfläche aus rostfreiem Edelstahl AISI 304, kratzfest.
- Ausgelegfläche aus mattglänzendem Edelstahl AISI 304.
- Innenverarbeitung des Möbels aus rostfreiem Edelstahl AISI 304.
- Papiertaschen.
- Thermostatventil mit Kühlung R404A.
- Kondenswasser Sammelbehälter.
- Elektronische Steuerung.
- Zahltafel aus lackiertem Aluminium.
- Vitrinenbeleuchtung mit Lampenschutz.
- Abtaumung mit automatischem Stopp des Kompressors.
- Individuell gestaltbares Frontpaneel (Luxury).
- Umlaufende Wischleiste (Luxury).



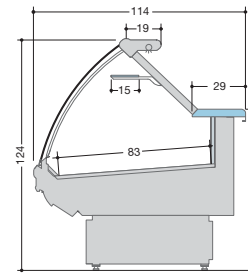
ERGO **EP100**



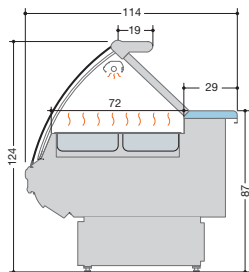
ERGO **EP200**



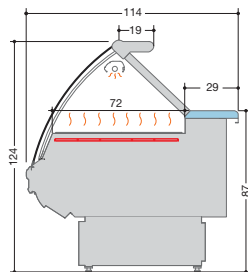
ERGO **EP300**



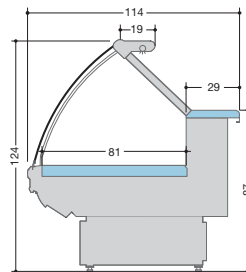
ERGO **EP310**



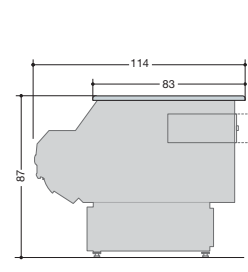
ERGO **EP400HM**



ERGO **EP400HS**



ERGO **EP500**



ERGO **SERVICE POINT**

*	EP100	EP200	EP300	EP310	EP400	EP500
93,7	●	●		●		
125	●	●	●	●	●	●
187,5	●	●	●	●	●	●
250	●	●			●	●
312,5	●	●				●
375	●	●	●			
AA 45°	●	●				
AA 90°	●	●				
AC 45°	●	●				
AC 90°	●	●				

▶ * Mobile senza spalle, cm

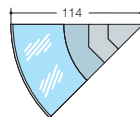
▶ * Unit without endwalls, cm

▶ * Vitrines sans joues, cm

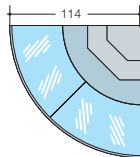
▶ * Möbels ohne Seitenteile, cm

- ▶ Angolo aperto refrigerato
- ▶ Outside corner refrigerated
- ▶ Angle ouvert réfrigéré
- ▶ Außen Winkel gekühlt

AA 45°

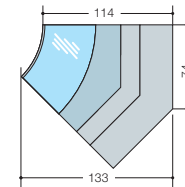


AA 90°

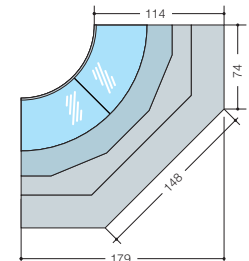


- ▶ Angolo chiuso refrigerato
- ▶ Inside corner refrigerated
- ▶ Angle fermé réfrigéré
- ▶ Innen Winkel gekühlt

AC 45°



AC 90°





Standard version

10-09/2000 - pellino.it

Le caratteristiche tecniche potranno subire modifiche senza preavviso - Technical details could be changed without notice
Les caractéristiques techniques pourraient subir des modifications sans préavis - Änderungen vorbehalten



CRIOCABIN SpA | 35033 Praglia di Teolo - Padova (Italy)
Z.I. Selve - Via S. Benedetto, 40/A

Tel. +39 049 9909100
Fax +39 049 9909200

www.criocabin.com
sales@criocabin.com